

## Exercise Pen: from HRS or Pet Stores



Short on area but have a long space behind the sofa? Exercise pens are perfect because you can set them up in most any configuration. Here's a pen set up behind the family's sofa. You can see a special-made base keeps mess in and protects the floor.

## Custom PVC Wire Pen: from KW Cages



Here, the owner had a custom pen made by KW Cages. These are fairly inexpensive and can be made to fit a special spot in your home. This setup includes a nice big litter box and a plastic tub, turned upside down, with a hole cut in. Great for hiding and climbing!

## Planning your rabbit's habitat:

- Make sure you purchase a cage that is large enough to accommodate Bunny when he/she is full grown
- Make sure the cage is large enough for bunny to lay stretched out, when all the necessary supplies (litterbox, water & food bowls) are inside
- Take into consideration, the amount of daily run time your rabbit will receive, when determining cage size; in this case, bigger is better - or use an exercise pen!
- Make sure the cage door is large enough for a large cat litterbox to fit through
- Make sure the cage door opens from the side, and not down, so bunny's feet won't get caught when entering or exiting the cage (a safety hazard)
- Urine guards are helpful in keeping hay and urine in the cage
- Exercise pens are an excellent home for the bunny, and you get more room for your money!

*And, don't forget, bunny needs several hours "out of cage or pen" time, each day*

## RESOURCES FOR HOUSING

**Exercise Pens:** Most Pet Supply Stores and HRS Bunny Supply Store (address on front).

**Two-Story Metro Condo:** KW Cages, 9565 Pathway Street, Santee, 619-596-4000

**Libby Cage:** KW Cages, 9565 Pathway Street, Santee, 619-596-4000; HRS Bunny Supply Store

**Leith Petwerks Condo:** [www.leithpetwerks.com](http://www.leithpetwerks.com)

**Neat Idea Cubes Cages:** <http://www.rabbitnetwork.org/articles/NIC.shtml>



**San Diego House Rabbit Society**

**619-718-7777**

**[hrs@sandiegorabbits.org](mailto:hrs@sandiegorabbits.org)**

**Visit us at [www.sandiegorabbits.org](http://www.sandiegorabbits.org)**

# SAN DIEGO HOUSE RABBIT SOCIETY

## HOUSING YOUR RABBIT COMPANION



**Visit San Diego HRS for more great ideas on housing.**

**HRS Bunny Supply Store  
4805 Mercury Street, Suite B  
(corner of Mercury & Ronson Road) Kearny Mesa, 92111**

**Open:  
1st and 3rd Saturdays  
Noon to 3 p.m.**

# RABBITS HOUSED INDOORS LIVE LONGER & HEALTHIER LIVES

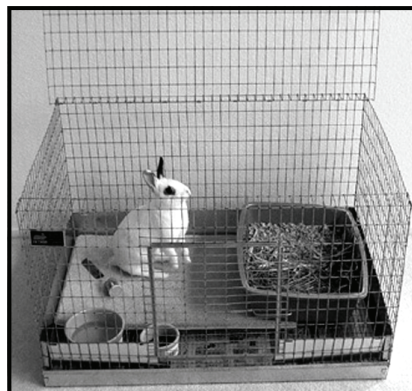
Yes, you will need a cage or a pen. The cage will be your rabbit's nest; rabbits usually prefer to have a safe area they can call their own. Set the cage on the floor, in an area where you spend a lot of time, such as the living room or family room. Do not put the cage near a heater or a loud TV or stereo. Always provide shade from a sunny window. San Diego House Rabbit Society (HRS) recommends that you "not" house bunny in a child's bedroom. When secluded in one room your rabbit may be cut off from the family and unsure of areas outside. The more contact you have with your rabbit, the more you will enjoy each other.

Rabbits are crepuscular, which means that they generally sleep during the day and during the night, but are ready to play at dawn and twilight. So, if you're at work during the day, they won't mind being in a "roomy" cage. *But they MUST be let out for several hours each day, both to exercise and to have social interaction with you.*

## GREAT IDEAS FOR HOUSING

The ideas and photos shown below are currently in use in "house bunny" homes. These are setups that work well, and make it easy to include bunny as part of the family. Visit the San Diego HRS website at [www.sandiegorabbits.org](http://www.sandiegorabbits.org) (click on adoption) for more great ideas.

### LIBBY CAGE: from KW Cages or HRS



This is a Libby cage, available from KW Cages. This simple setup is 36" wide by 24" deep with a top-opening lid. This is a roomy and easy setup for your rabbit.

### Exercise Pen : from HRS or Pet Stores



This wonderful setup brings bunny right into your family room where you can enjoy her company and she can be a part of the family. This roomy pen is flexible and holds everything bunny needs; litter box, toys, food & water bowls, and a box to hide and play in. This 36 inch high pen is high enough to prevent bunny from jumping out. A piece of carpet protects the floor.

### Metro Condo: from KW Cages



The Metro Condo, from KW Cages, is a wonderful two-story abode for bunny. Made from attractive PVC coated wire, it's easy to clean and lasts forever! You can see here that bunny lives in the dining room area, keeping her in the middle of family activities.

### Multi-Story Condo: Leith Petwerks



This magnificent structure is a Leith Petwerks condo. It's made in several widths and stories and is an ultimate condo for your bunny companion. A little more expensive, but worth it!