

box. **Wood shavings are not recommended** as they can present a danger to your rabbit's health. The "pine smell" is created by phenols in the wood, which present a health hazard to rabbits. The best litters for rabbits are those that are paper-based, or pelleted products that have been produced under high heat to remove the dangerous phenols. If using a wood based litter, stick with one made from hard woods. Stay away from Pine. The *corn cob litters are also hazardous* as bunny may eat them and suffer stomach impaction.

DO NOT USE CLAY OR SILICA BASED CAT LITTERS!

Typical cat litters can be deadly to rabbits if ingested. Rabbits like to nibble in their box and may dig through the litter, ingesting some in the process. Clay or silica litters will cause an impaction of the intestines, which can kill your rabbit.

Bunny safe litters:

- CareFresh
- Yesterday's News
- Feline Pine (no phenols)
- Critter Country

WHERE TO GET RABBIT HAY

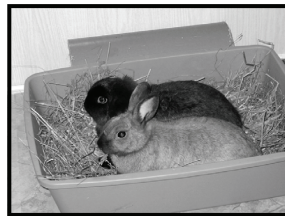
Since hay is the single most important part of your rabbit's diet, and important for the litter box, you should find out where to get hay for your bunny and which hays are best.

Pet stores carry bagged hay for small animals. If you buy this, stick to the Timothy or Orchard Grass hays. This is the staple of your bunny's diet. If your rabbit is a baby, or has special nutritional needs (check with

your vet), you may want to add a handful of alfalfa hay on top of the grass hay.

In **San Diego** the House Rabbit Society (HRS) sells large boxes of freshly packed, mixed hays; the best for bunny's health. These large boxes of hay contain 8 to 10 pounds of mixed hays and cost \$10 each. Get your hay from these locations and support rabbit rescue!

- **HRS Bunny Supply Store**
4805 Mercury Street, Suite B, Kearny Mesa
(corner of Mercury & Ronson Road)
Noon - 3 p.m.
1st & 3rd Saturdays of every month
- **Rancho San Diego Animal Hospital**
El Cajon, 619-660-6767
- **Diane Calkins Bunny Shed**
Encinitas, 760-633-1564
- **Acacia Animal Health Center**
Escondido, 760-745-8115



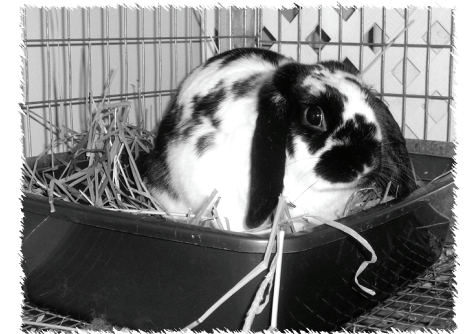
Happy bunnies, sharing a litter box filled with hay.



San Diego House Rabbit Society
619-718-7777
hrs@sandiegorrabbits.org
Visit us at www.sandiegorrabbits.org

SAN DIEGO HOUSE RABBIT SOCIETY

LITTER BOX TRAINING YOUR RABBIT COMPANION



**To get help litter box
training your rabbit, email
hrs@sandiegorrabbits.org
or telephone
619-718-7777**

A FRESH HANDFUL OF HAY WILL ENTICE YOUR BUNNY TO USE HER LITTERBOX

Training a rabbit to use a litter box is quite easy and often rescues her from being relegated to the backyard. Training your rabbit to use a litter box also makes your clean-up job easier. Sticking to the basics, such as using the right kind of litter box, placing hay in the box, and using a bunny-safe litter, will enhance the process and make it easier for you.

FIRST STEPS

Spay or Neuter: The first key to litter box training your rabbit is to get bunny spayed or neutered. An intact rabbit will feel the need to mark territory and is more likely to spray and make a general mess. Altering your rabbit will eliminate the hormones that cause rabbits to mark.

Use the right box: There are many litter box choices on the market right now, including the little corner boxes. However, over many years of perfecting the art of litter box training, HRS foster homes have learned that basic, rectangle-shaped cat litter boxes work best. Adding a layer of bunny-safe litter is next, topped by a big handful of hay to entice bunny into her box. Other options include bus boy trays, dog litter boxes, or shallow plastic storage boxes.

LITTER BOX SETUP

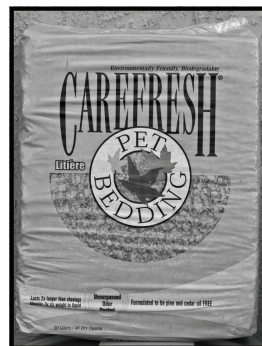
Set your rabbit up for success by using the litter box setup shown below. This setup is used in thousands of HRS foster homes and adopted rabbit homes nationwide - with great success!



Start with a basic rectangular cat litter pan. The larger, the better.



If you have more than one bunny, or an older rabbit, the large low-entry dog litter boxes work very well.



Next, add a bunny-safe litter product, such as CareFresh pet bedding.



Spread a one-inch layer of litter across the bottom of the box.



Spread a layer of hay across the bottom, adding a bit more in one end.

Place the litter box into bunny's cage or pen, with the "label" end in a corner. That will be the "potty" end and the big handful of hay will be the "kitchen" end. Adding hay is a sure enticement to get bunny into her box. She will munch on the hay and nature will take its course.

Learn more about litter box training at <http://www.rabbit.org/chapters/san-diego/behavior/index.html>

RECOMMENDED LITTERS

The House Rabbit Society recommends that you take great care when choosing a litter material for your rabbit's litter